



CyPB Polyclonal Antibody

Catalog No	YP-Ab-04338
Isotype	IgG
Reactivity	Human;Mouse;Rat
Applications	WB;ELISA
Gene Name	PPIB
Protein Name	Peptidyl-prolyl cis-trans isomerase B
Immunogen	The antiserum was produced against synthesized peptide derived from the C-terminal region of human PPIB. AA range:151-200
Specificity	CyPB Polyclonal Antibody detects endogenous levels of CyPB protein.
Formulation	Liquid in PBS containing 50% glycerol, 0.5% BSA and 0.02% sodium azide.
Source	Polyclonal, Rabbit,IgG
Purification	The antibody was affinity-purified from rabbit antiserum by affinity-chromatography using epitope-specific immunogen.
Dilution	Western Blot: 1/500 - 1/2000. ELISA: 1/20000. Not yet tested in other applications.
Concentration	1 mg/ml
Purity	≥90%
Storage Stability	-20°C/1 year
Synonyms	PPIB; CYPB; Peptidyl-prolyl cis-trans isomerase B; PPIase B; CYP-S1; Cyclophilin B; Rotamase B; S-cyclophilin; SCYLP
Observed Band	24kD
Cell Pathway	Virion . (Microbial infection).; Endoplasmic reticulum lumen . Melanosome . Identified by mass spectrometry in melanosome fractions from stage I to stage IV (PubMed:17081065). .
Tissue Specificity	Brain,Fetal brain cortex,Prostate,Skin,
Function	catalytic activity:Peptidylproline (omega=180) = peptidylproline (omega=0).,caution:It is uncertain whether Met-1 or Met-9 is the initiator.,enzyme regulation:Cyclosporin A (CsA) inhibits CYPB.,function:PPIases accelerate the folding of proteins. It catalyzes the cis-trans isomerization of proline imidic peptide bonds in oligopeptides.,similarity:Belongs to the cyclophilin-type PPIase family. PPIase B subfamily.,similarity:Contains 1 PPIase cyclophilin-type domain.,subcellular location:Identified by mass spectrometry in melanosome fractions from stage I to stage IV.,
Background	The protein encoded by this gene is a cyclosporine-binding protein and is mainly located within the endoplasmic reticulum. It is associated with the secretory pathway and released in biological fluids. This protein can bind to cells derived from T- and B-lymphocytes, and may regulate cyclosporine A-mediated



immunosuppression. Variants have been identified in this protein that give rise to recessive forms of osteogenesis imperfecta. [provided by RefSeq, Oct 2009],

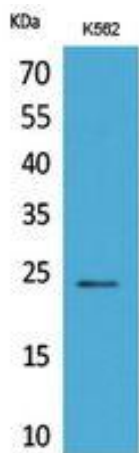
matters needing attention

Avoid repeated freezing and thawing!

Usage suggestions

This product can be used in immunological reaction related experiments. For more information, please consult technical personnel.

Products Images



Western Blot analysis of K562 cells using CyPB Polyclonal Antibody. Secondary antibody(catalog#:RS0002) was diluted at 1:20000